

Feedback

MA 2019-2021/Integrated MA 2017-2021in Literature

1. Students Feedback

No of responses analysed: 10

The number of responses is multiplied with the respective score to determine the total score.

S/N	Particulars	1	2	3	4	5	TOTAL SCORE
1	Suitability of the ongoing courses in the present context				6	4	44
2	Semester wise course credit distribution in the syllabus				4	6	46
3	Sequence of the courses in the syllabus				4	6	46
4	Adequacy of instructional hours in terms of lecture, practicals, tutorials				4	6	46
5	Adequacy of the course curriculum w.r.t. the programme				2	8	48
6	Provision of choices/electives for students in selecting courses			1	1	8	47
7	Orientation of the courses towards industry/societal needs			2	2	6	44
8	Availability of skill development/entrepreneurship-oriented components			4	4	2	38

9	Adequacy of projects/internships/fieldwork/laboratories for practical exposure in the syllabus			1	6	3	42
10	Research component in the courses			1	4	5	35
11	Provision of enhancing student's creativity within the courses			2	3	5	43
12	Relevance of the syllabus towards employability of students			1	3	6	45
13	Conduciveness of the syllabus content towards higher studies			1	3	6	45
14	Suitability of the Textbooks/reference material suggested for the courses				3	7	47
15	Size of the syllabus in terms of load on the student			1	5	4	43

The satisfaction level of the students of this batch ranges from average to very high.

Specific recommendations:

TOPICS TO INCLUDE

Children's literature, Popular fiction and a scope for studying regional literature to some extent.

Basics in Creative and Critical Writing can be included.

A World Literature paper

2. Analysis of Students Feedback

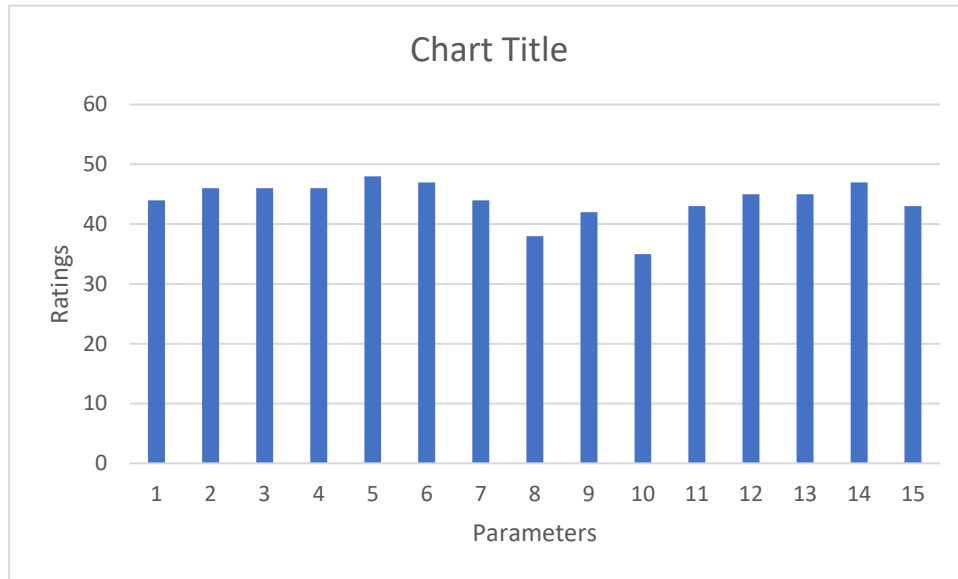
Parameters:

*1 - Suitability of the ongoing courses in the present context

*2 - Semester wise course credit distribution in the syllabus

*3 - Sequence of the courses in the syllabus

*4 - Adequacy of instructional hours in terms of lecture, practicals, tutorials



Total 24 students submitted their feedback for this batch. An average of 10 responses were taken into account while preparing the analysis.

BA, B.ED IN ENGLISH 2016-2021

1. Students Feedback

No of responses analysed: 2

The number of responses is multiplied with the respective score to determine the total score.

S/N	Particulars	1	2	3	4	5	Total
1	Suitability of the ongoing courses in the present context				1	1	9
2	Semester wise course credit distribution in the syllabus					2	10
3	Sequence of the courses in the syllabus					2	10
4	Adequacy of instructional hours in terms of lecture, practicals, tutorials				1	1	9
5	Adequacy of the course curriculum w.r.t. the programme				1	1	9
6	Provision of choices/electives for students in selecting courses			1		1	8
7	Orientation of the courses towards industry/societal needs			1		1	8
8	Availability of skill development/entrepreneurship-oriented components				1	1	9

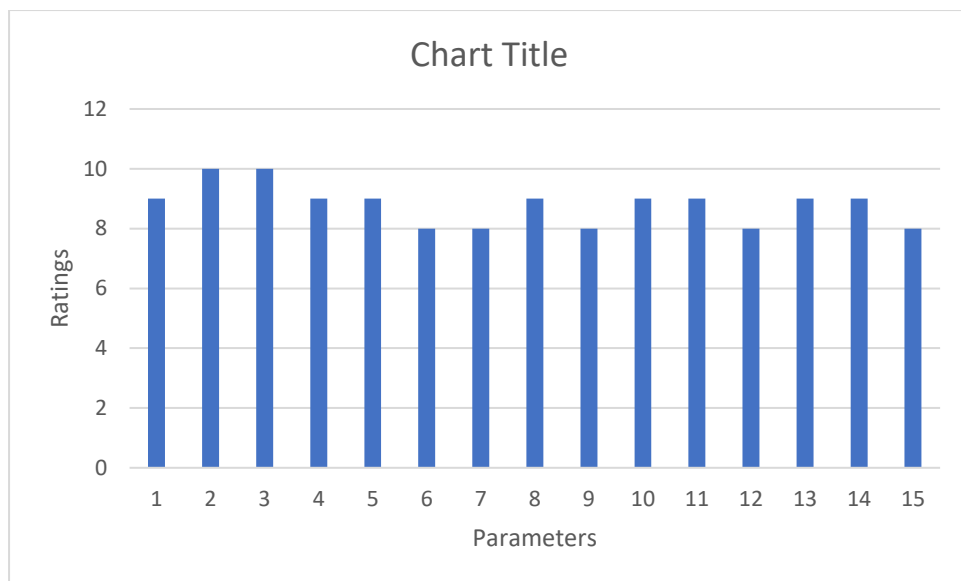
9	Adequacy of projects/internships/fieldwork/laboratories for practical exposure in the syllabus			1		1	8
10	Research component in the courses				1	1	9
11	Provision of enhancing student's creativity within the courses				1	1	9
12	Relevance of the syllabus towards employability of students			1		1	8
13	Conduciveness of the syllabus content towards higher studies				1	1	9
14	Suitability of the Textbooks/reference material suggested for the courses				1	1	9
15	Size of the syllabus in terms of load on the student			1		1	8

The satisfaction level of the students of this batch ranges from average to very high in each parameter.

Specific recommendations:

No suggestions from this batch.

2. Analysis of Students Feedback



Parameters:

- *1 - Suitability of the ongoing courses in the present context
- *2 - Semester wise course credit distribution in the syllabus
- *3 - Sequence of the courses in the syllabus
- *4 - Adequacy of instructional hours in terms of lecture, practicals, tutorials
- *5 - Adequacy of the course curriculum w.r.t. the programme
- *6 - Provision of choices/electives for students in selecting courses
- *7 - Orientation of the courses towards industry/societal needs
- *8 - Availability of skill development/entrepreneurship-oriented components
- *9 - Adequacy of projects/internships/fieldwork/laboratories for practical exposure in the syllabus
- *10 - Research component in the courses
- *11 - Provision of enhancing student's creativity within the courses
- *12 - Relevance of the syllabus towards employability of students
- *13 - Conduciveness of the syllabus content towards higher studies
- *14 - Suitability of the Textbooks/reference material suggested for the courses
- *15 - Size of the syllabus in terms of load on the student

Total 02 students have submitted their feedback for this batch. All 02 responses were taken into account while preparing the analysis.

MA in English 2019-2021

Teacher's Feedback

1. Responses

On a scale of (1-5) with 1 being the lowest and 5 being the highest, rate the following items corresponding to the course curriculum of above programme.

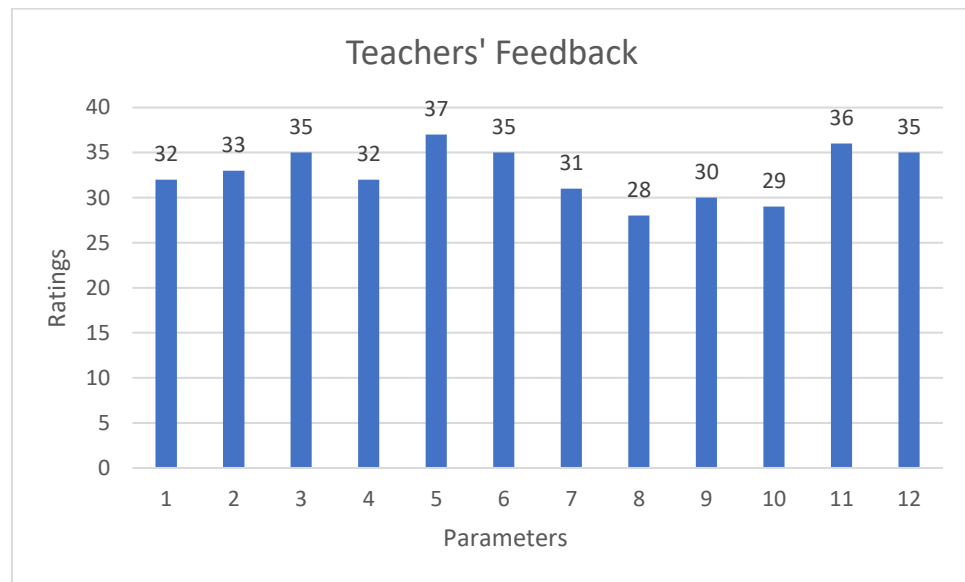
No of responses analysed: 10

The number of responses is multiplied with the respective score to determine the total score.

S/N	Particulars	1	2	3	4	5	Total Score
1	Alignment of the course and programme outcomes			1	7	2	41
2	Fulfillment of learning objectives through the course content			1	4	5	44
3	Semester wise course credit distribution in the syllabus			1	1	8	47
4	Sequence of the courses in the syllabus			1	2	7	46
5	Adequacy of instructional hours in terms of lecture, practicals, tutorials				5	5	45
6	Adequacy of the course curriculum w.r.t. the programme			1	5	4	43
7	Provision of choices/electives for students in selecting courses			1	6	3	42
8	Adequacy of projects/internships/fieldwork/laboratories for practical exposure in the syllabus		1	4	5		34
9	Research component in the courses		1	2	3	4	40
10	Provision of enhancing student's creativity within the courses	1		4	4	1	34
11	Suitability of the Textbooks/reference material suggested for the courses			1	6	3	42

12	Availability of the reading material suggested for the courses				9	1	41
----	--	--	--	--	---	---	----

2. Analysis of Teacher' Feedback



Total 10 responses were received, and all responses have been taken into consideration for the analysis. Out of the total score 50, the scores range from 34 to 47 while the lowest scores were obtained against the 8th and 10th parameters.

Any topic/topic(s) suggested to be included in the syllabus:

1. Indian and classical texts in translation could be included in the syllabus.
2. Classical Western Literature, World Literature, Comparative Literature (selections), Indian Literature in Translation (selections)
3. More literature courses on single themes or areas as optional
4. Technical English, Indian aesthetics, Indian Literature in Translation
5. Indian Literature in Translation

6. Language and Intercultural Communication

Any other suggestion(s):

1. The Syllabus for MA should be separated from the Integrated MA English since most students join as fresh students as the Masters level
2. A term paper for every course (20% weightage) should be reintroduced in every course
3. There should be more research-based assignments

Integrated MA in English 2017-2021

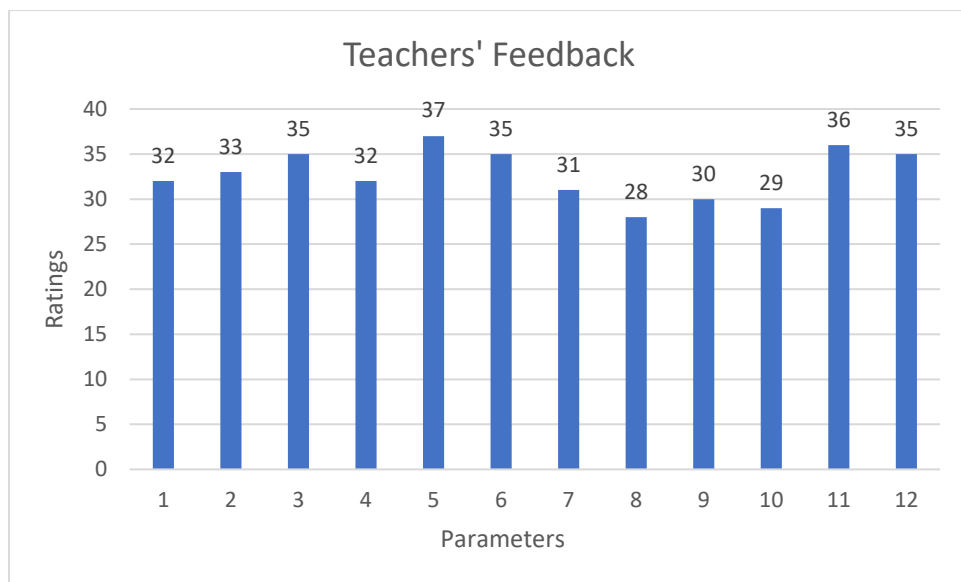
Teacher's feedback

No of responses analysed: 8

The number of responses is multiplied with the respective score to determine the total score.

S/N	Particulars	1	2	3	4	5	Total Score
1	Alignment of the course and programme outcomes			2	4	2	32
2	Fulfillment of learning objectives through the course content			1	5	2	33
3	Semester wise course credit distribution in the syllabus			2	1	5	35
4	Sequence of the courses in the syllabus				4	4	32
5	Adequacy of instructional hours in terms of lecture, practicals, tutorials				3	5	37
6	Adequacy of the course curriculum w.r.t. the programme				5	3	35
7	Provision of choices/electives for students in selecting courses		1	1	4	2	31
8	Adequacy of projects/internships/fieldwork/laboratories for practical exposure in the syllabus	1		3	2	2	28
9	Research component in the courses		2	1	2	3	30
10	Provision of enhancing student's creativity within the courses		1	2	4	1	29
11	Suitability of the Textbooks/reference material suggested for the courses			1	2	5	36
12	Availability of the reading material suggested for the courses				5	3	35

3. Analysis of Teacher' Feedback



Total 08 responses were received, and all responses have been taken into consideration for the analysis. Out of the total score 40, the scores range from 28 to 37 while the lowest scores were obtained against the 8th and 10th parameters.

Any topic/topic(s) suggested to be included in the syllabus:

1. One course on the basics of language (UGC NET); one on English language education in India (UGC NET)
2. Classical literature
3. Western/world classics (selection); Indian Literature in Translation, Classical India Literature (selections)
4. A foreign language preferably French/German/Spanish
5. A course on western classical literature

Any other suggestion(s):

1. Number of open electives (like earlier pass subjects) should be on the minimal side

2. There should be fewer examination but more involvement of the students in the classroom activities. Students should be encouraged to co-produce knowledge and content and be discouraged from rote learning.
3. The courses should be directly aligned to the syllabus for NTA, NET examination. All the ten units should be incorporated.

Feedback Analysis
MA in Linguistics and Language Technology
Year 2019 - 2021

1 Students

The committee members discussed and intimated the HoD had been on the issues and concerns and subsequently, action taken report had been prepared. The general observation inferred was the high positivity rate on course curriculum by the four outgoing batches including this batch. The numeric analytics shows alumni satisfaction on course curriculum and additional notes given by few students were taken into consideration at various stages including the merger of the program with MA in Linguistics and Language Technology.

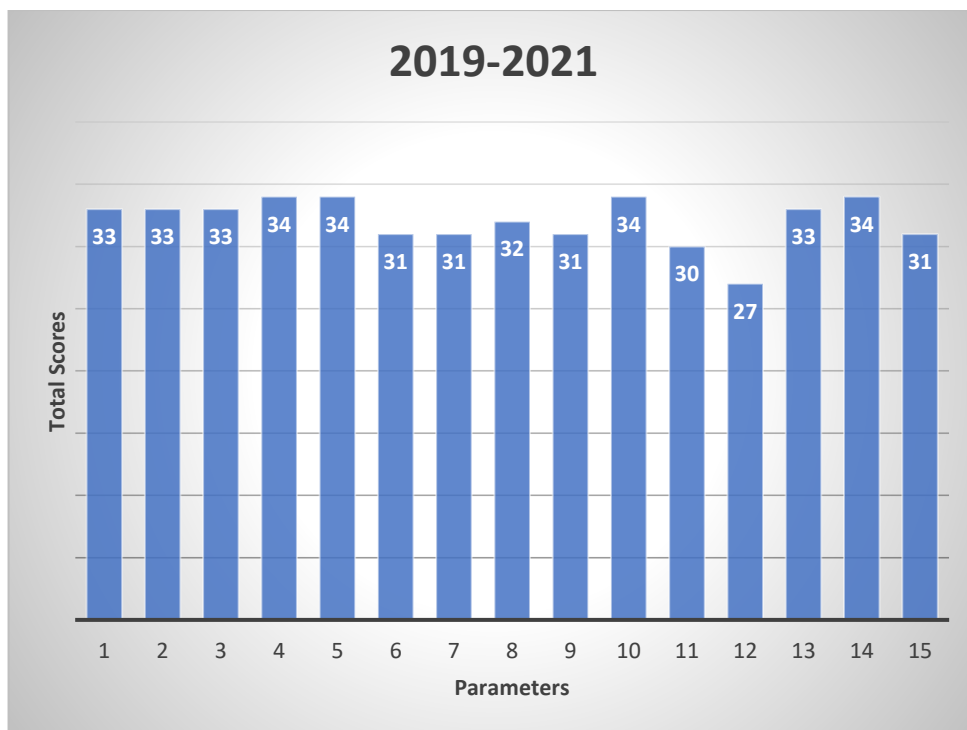
Responses

On a scale of (1-5) with 1 being the lowest and 5 being the highest, the following items corresponding to the course curriculum were given to the students for rating. The numbers shown against each parameter are the number of responses (students) in that score-line.

S/N	Particulars	1	2	3	4	5	Total Score
1	Suitability of the ongoing courses in the present context				2	5	33
2	Semester wise course credit distribution in the syllabus				2	5	33
3	Sequence of the courses in the syllabus				2	5	33
4	Adequacy of instructional hours in terms of lecture, practicals, tutorials				1	6	34
5	Adequacy of the course curriculum w.r.t. the programme				1	6	34
6	Provision of choices/electives for students in selecting courses			1	2	4	31
7	Orientation of the courses towards industry/societal needs				4	3	31
8	Availability of skill development/entrepreneurship-oriented components				3	4	32

9	Adequacy of projects/internships/fieldwork/laboratories for practical exposure in the syllabus				4	3	31
10	Research component in the courses				1	6	34
11	Provision of enhancing student's creativity within the courses			1	3	3	30
12	Relevance of the syllabus towards employability of students			2	4	1	27
13	Conduciveness of the syllabus content towards higher studies				2	5	33
14	Suitability of the Textbooks/reference material suggested for the courses				1	6	34
15	Size of the syllabus in terms of load on the student			1	2	4	31

Analysis



Parameters:

- *1 - Suitability of the ongoing courses in the present context
- *2 - Semester wise course credit distribution in the syllabus
- *3 - Sequence of the courses in the syllabus
- *4 - Adequacy of instructional hours in terms of lecture, practicals, tutorials
- *5 - Adequacy of the course curriculum w.r.t. the programme
- *6 - Provision of choices/electives for students in selecting courses
- *7 - Orientation of the courses towards industry/societal needs
- *8 - Availability of skill development/entrepreneurship-oriented components
- *9 - Adequacy of projects/internships/fieldwork/laboratories for practical exposure in the syllabus
- *10 - Research component in the courses
- *11 - Provision of enhancing student's creativity within the courses
- *12 - Relevance of the syllabus towards employability of students
- *13 - Conduciveness of the syllabus content towards higher studies
- *14 - Suitability of the Textbooks/reference material suggested for the courses
- *15 - Size of the syllabus in terms of load on the student

Total 07 responses have been considered for the analysis of this batch. All the parameters have shown remarkable improvement and satisfactory scores.

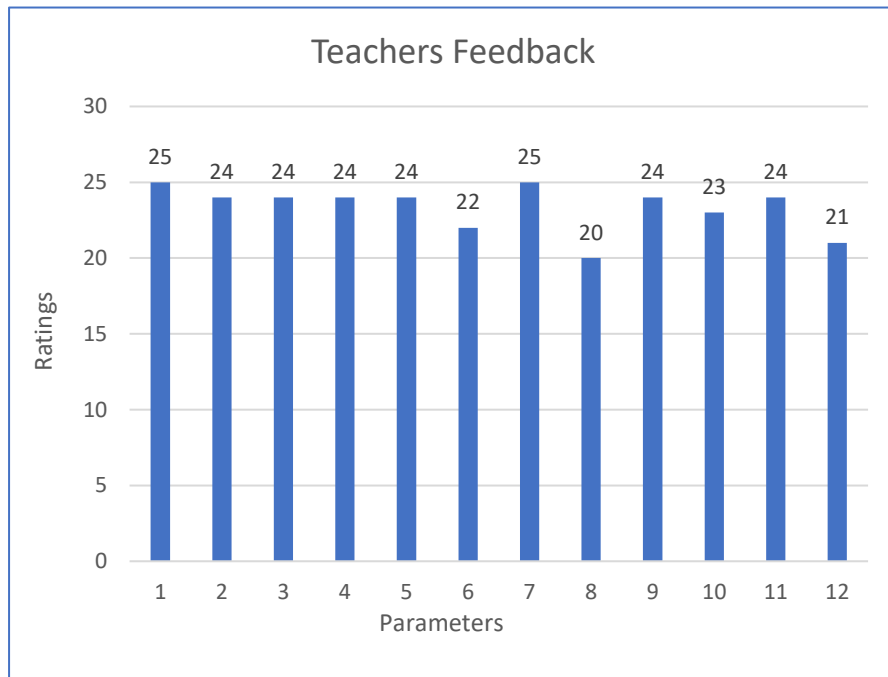
2 Teachers

Responses

On a scale of (1-5) with 1 being the lowest and 5 being the highest, rate the following items corresponding to the course curriculum of above programme.

S/N	Particulars	1	2	3	4	5	Total Score
1	Alignment of the course and programme outcomes					5	25
2	Fulfillment of learning objectives through the course content				1	4	24
3	Semester wise course credit distribution in the syllabus				1	4	24
4	Sequence of the courses in the syllabus				1	4	24
5	Adequacy of instructional hours in terms of lecture, practicals, tutorials				1	4	24
6	Adequacy of the course curriculum w.r.t. the programme				3	2	22
7	Provision of choices/electives for students in selecting courses					5	25
8	Adequacy of projects/internships/fieldwork/laboratories for practical exposure in the syllabus				5		20
9	Research component in the courses				1	4	24
10	Provision of enhancing student's creativity within the courses				2	3	23
11	Suitability of the Textbooks/reference material suggested for the courses				1	4	24
12	Availability of the reading material suggested for the courses			1	2	2	21

Analysis



Parameters:

- *1 - Suitability of the ongoing courses in the present context
- *2 - Semester wise course credit distribution in the syllabus
- *3 - Sequence of the courses in the syllabus
- *4 - Adequacy of instructional hours in terms of lecture, practicals, tutorials
- *5 - Adequacy of the course curriculum w.r.t. the programme
- *6 - Provision of choices/electives for students in selecting courses
- *7 - Orientation of the courses towards industry/societal needs
- *8 - Availability of skill development/entrepreneurship-oriented components
- *9 - Adequacy of projects/internships/fieldwork/laboratories for practical exposure in the syllabus
- *10 - Research component in the courses
- *11 - Provision of enhancing student's creativity within the courses
- *12 - Relevance of the syllabus towards employability of students
- *13 - Conduciveness of the syllabus content towards higher studies
- *14 - Suitability of the Textbooks/reference material suggested for the courses
- *15 - Size of the syllabus in terms of load on the student

Out of total 25 marks, the scores range between 20 to 25 and teachers' satisfaction level on course curriculum ranges from average to very high. The lowest scores were obtained in the 8th and 9th parameters.

09-nov-2021

G.K. Borah, Professor
Head, Dept of English