

**MA 2018-2020/Integrated MA 2016-2020 in Literature**

**1. Alumni Feedback**

**No of responses analysed: 10**

**The number of responses is multiplied with the respective score to determine the total score.**

<b>S/N</b>	<b>Particulars</b>	<b>1</b>	<b>2</b>	<b>3</b>	<b>4</b>	<b>5</b>	<b>TOTAL SCORE</b>
1	Suitability of the ongoing courses in the present context			1	7	2	41
2	Semester wise course credit distribution in the syllabus			1	8	1	40
3	Sequence of the courses in the syllabus			1	7	2	41
4	Adequacy of instructional hours in terms of lecture, practicals, tutorials				9	1	41
5	Adequacy of the course curriculum w.r.t. the programme			1	8	1	40
6	Provision of choices/electives for students in selecting courses			2	7	1	39
7	Orientation of the courses towards industry/societal needs			2	7	1	39
8	Availability of skill development/entrepreneurship-oriented components		1	3	6		35

9	Adequacy of projects/internships/fieldwork/laboratories for practical exposure in the syllabus	1	1	1	6	1	35
10	Research component in the courses		1	1	7	1	38
11	Provision of enhancing student's creativity within the courses	1	1	1	6	1	35
12	Relevance of the syllabus towards employability of students		1	1	5	3	40
13	Conduciveness of the syllabus content towards higher studies			2	7	1	39
14	Suitability of the Textbooks/reference material suggested for the courses		1	1	6	2	39
15	Size of the syllabus in terms of load on the student			1	7	2	41

The satisfaction level of the students of this batch ranges from very poor to very high.

**Specific recommendations:**

**TOPICS TO INCLUDE:**

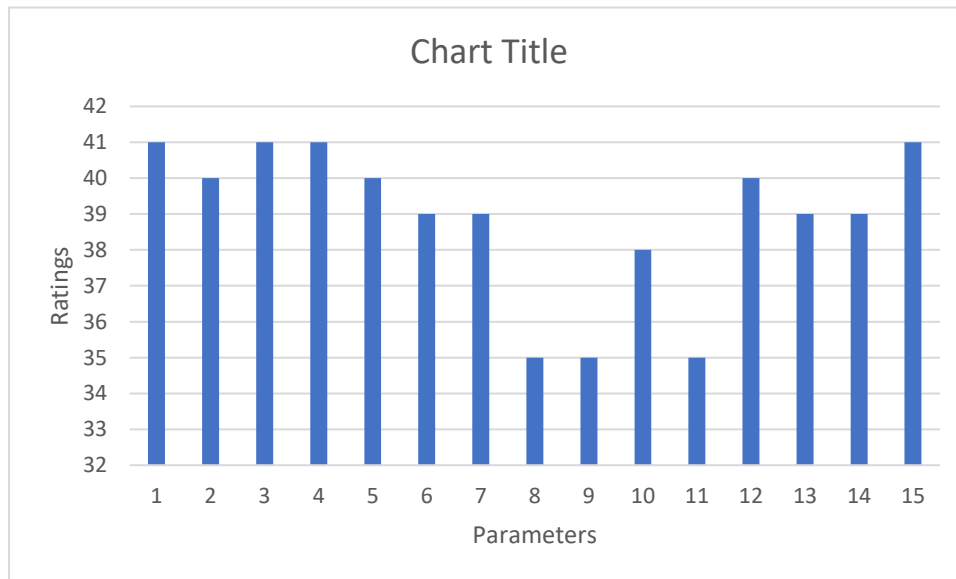
Research related topics, women's writing and world literature

Other World Literatures along with Classical Literature

**OTHER SUGGESTIONS**

Students should be given a space towards the enhancement of creative writing. A structured course should include creative writing along with Electives of Foreign Language so that the students could opt for specific Masters in Foreign language in the future.

## 2. Analysis of Students Feedback



### Parameters:

- \*1 - Suitability of the ongoing courses in the present context
- \*2 - Semester wise course credit distribution in the syllabus
- \*3 - Sequence of the courses in the syllabus
- \*4 - Adequacy of instructional hours in terms of lecture, practicals, tutorials
- \*5 - Adequacy of the course curriculum w.r.t. the programme
- \*6 - Provision of choices/electives for students in selecting courses
- \*7 - Orientation of the courses towards industry/societal needs
- \*8 - Availability of skill development/entrepreneurship-oriented components
- \*9 - Adequacy of projects/internships/fieldwork/laboratories for practical exposure in the syllabus
- \*10 - Research component in the courses
- \*11 - Provision of enhancing student's creativity within the courses
- \*12 - Relevance of the syllabus towards employability of students
- \*13 - Conduciveness of the syllabus content towards higher studies
- \*14 - Suitability of the Textbooks/reference material suggested for the courses
- \*15 - Size of the syllabus in terms of load on the student

Total 11 students have submitted their feedback for this batch. Only 10 responses were taken into account while preparing the analysis.

## INTEGRATED BA, B.ED 2015-2020

### Alumni Feedback

No of responses analysed: 3

The number of responses is multiplied with the respective score to determine the total score.

S/N	Particulars	1	2	3	4	5	Total Score
1	Suitability of the ongoing courses in the present context			1		2	13
2	Semester wise course credit distribution in the syllabus			1	1	1	12
3	Sequence of the courses in the syllabus			2		5	11
4	Adequacy of instructional hours in terms of lecture, practicals, tutorials			1		2	13
5	Adequacy of the course curriculum w.r.t. the programme			3			9
6	Provision of choices/electives for students in selecting courses		1	1	1		9
7	Orientation of the courses towards industry/societal needs			1	1	1	10
8	Availability of skill development/entrepreneurship-oriented components	1	1		1		7
9	Adequacy of projects/internships/fieldwork/laboratories for practical exposure in the syllabus			2		1	11

10	Research component in the courses		1		1	1	10
11	Provision of enhancing student's creativity within the courses	1	1			1	8
12	Relevance of the syllabus towards employability of students		1		1	1	11
13	Conduciveness of the syllabus content towards higher studies	1		1	1		8
14	Suitability of the Textbooks/reference material suggested for the courses		1		1	1	11
15	Size of the syllabus in terms of load on the student			1	1	1	12

The satisfaction level of the students of this batch ranges from poor to very high in each parameter.

**Specific recommendations:**

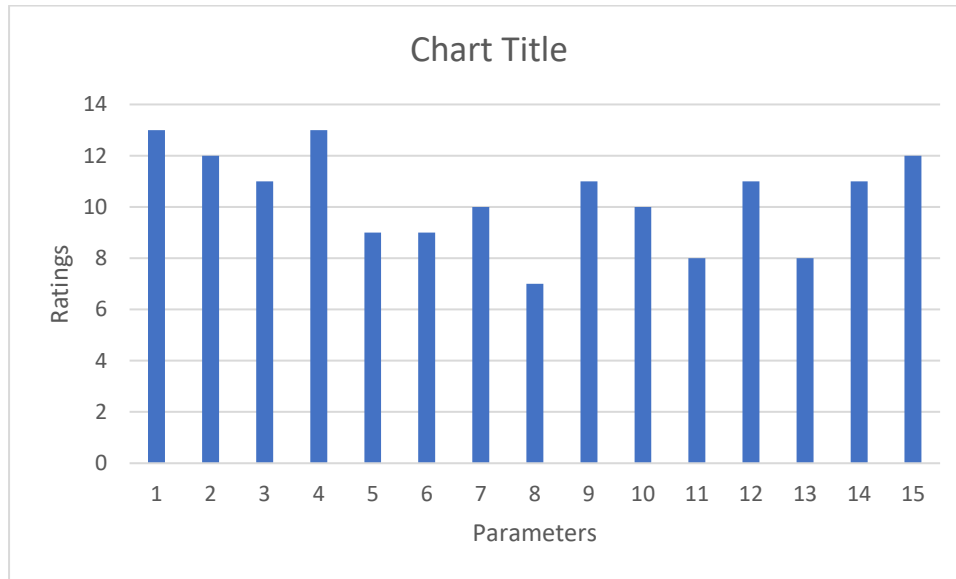
The students suggested that the following courses might be added to the syllabus:

There was a dearth of discussion of Critical Theories.

The students also gave the following comments:

Literary History should be taught from the very first semester.

## Analysis of Students Feedback



### Parameters:

- \*1 - Suitability of the ongoing courses in the present context
- \*2 - Semester wise course credit distribution in the syllabus
- \*3 - Sequence of the courses in the syllabus
- \*4 - Adequacy of instructional hours in terms of lecture, practicals, tutorials
- \*5 - Adequacy of the course curriculum w.r.t. the programme
- \*6 - Provision of choices/electives for students in selecting courses
- \*7 - Orientation of the courses towards industry/societal needs
- \*8 - Availability of skill development/entrepreneurship-oriented components
- \*9 - Adequacy of projects/internships/fieldwork/laboratories for practical exposure in the syllabus
- \*10 - Research component in the courses
- \*11 - Provision of enhancing student's creativity within the courses
- \*12 - Relevance of the syllabus towards employability of students
- \*13 - Conduciveness of the syllabus content towards higher studies
- \*14 - Suitability of the Textbooks/reference material suggested for the courses
- \*15 - Size of the syllabus in terms of load on the student

Total 03 students have submitted their feedback for this batch. All 03 responses were taken into account while preparing the analysis.

## MA in English(2018- 2020)

### Teacher's feedback

#### 1. Responses

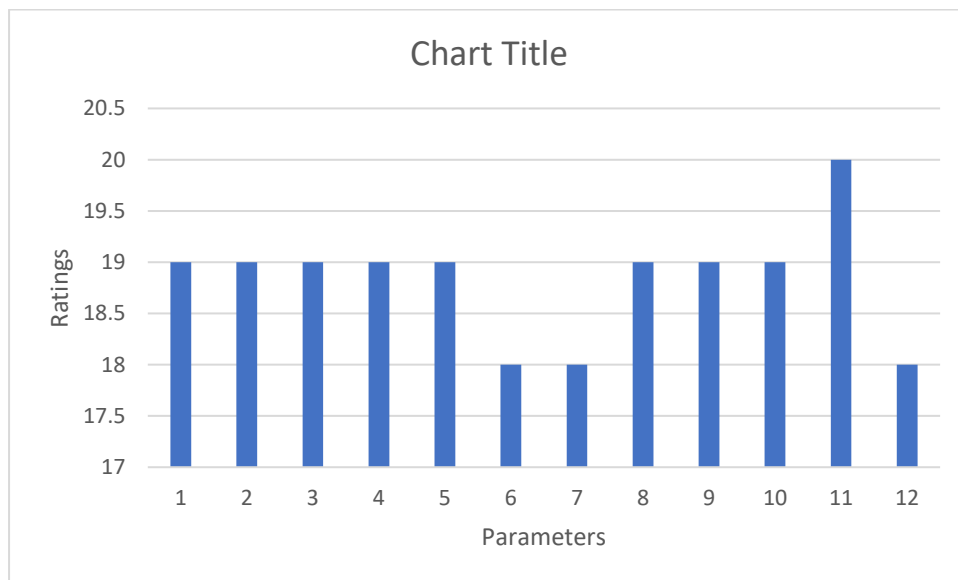
No of responses analysed: 4

The number of responses is multiplied with the respective score to determine the total score.

S/N	Particulars	1	2	3	4	5	Total Score
1	Alignment of the course and programme outcomes				1	3	19
2	Fulfillment of learning objectives through the course content				1	3	19
3	Semester wise course credit distribution in the syllabus				1	3	19
4	Sequence of the courses in the syllabus				1	3	19
5	Adequacy of instructional hours in terms of lecture, practicals, tutorials				1	3	19
6	Adequacy of the course curriculum w.r.t. the programme			1		3	18
7	Provision of choices/electives for students in selecting courses			1		3	18
8	Adequacy of projects/internships/fieldwork/laboratories for practical exposure in the syllabus				1	3	19
9	Research component in the courses				1	3	19
10	Provision of enhancing student's creativity within the courses				1	3	19

11	Suitability of the Textbooks/reference material suggested for the courses					4	20
12	Availability of the reading material suggested for the courses			1		3	18

### Analysis of Teacher' Feedback



Total 04 responses were received, and all responses have been taken into consideration for the analysis.

#### Suggestions:

- Include courses on Classical Indian Literature (Selections) and Modern Indian Literature (Selections)
- Reduce the number of examinations

### Integrated MA in English(2017- 2020)

#### Teacher's feedback

#### Responses:

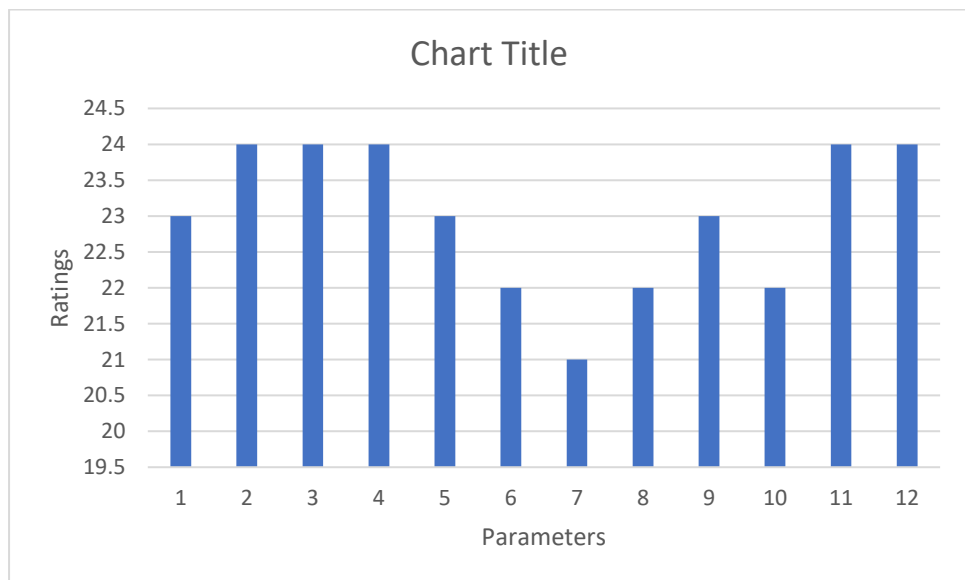
No of responses analysed: 4

The number of responses is multiplied with the respective score to determine the total score.

S/N	Particulars	1	2	3	4	5	Total Score
1	Alignment of the course and programme outcomes				2	3	23
2	Fulfillment of learning objectives through the course content				1	4	24
3	Semester wise course credit distribution in the syllabus				1	4	24
4	Sequence of the courses in the syllabus				1	4	24
5	Adequacy of instructional hours in terms of lecture, practicals, tutorials				2	3	23
6	Adequacy of the course curriculum w.r.t. the programme			1	1	3	22
7	Provision of choices/electives for students in selecting courses			2		3	21
8	Adequacy of projects/internships/fieldwork/laboratories for practical exposure in the syllabus			1	1	3	22
9	Research component in the courses				2	3	23
10	Provision of enhancing student's creativity within the courses			1	1	3	22

11	Suitability of the Textbooks/reference material suggested for the courses				1	4	24
12	Availability of the reading material suggested for the courses				1	4	24

### Analysis of Teacher' Feedback



Total 05 responses were received, and all responses have been taken into consideration for the analysis.

### Suggestions:

- Include more practical skill courses, courses on Indian Literature and Western Classics
- Fewer examinations and more scope for student participation in knowledge production

**Feedback Analysis**  
**MA in Linguistics and Language Technology**  
**Year 2018 - 2020**

**1 Students**

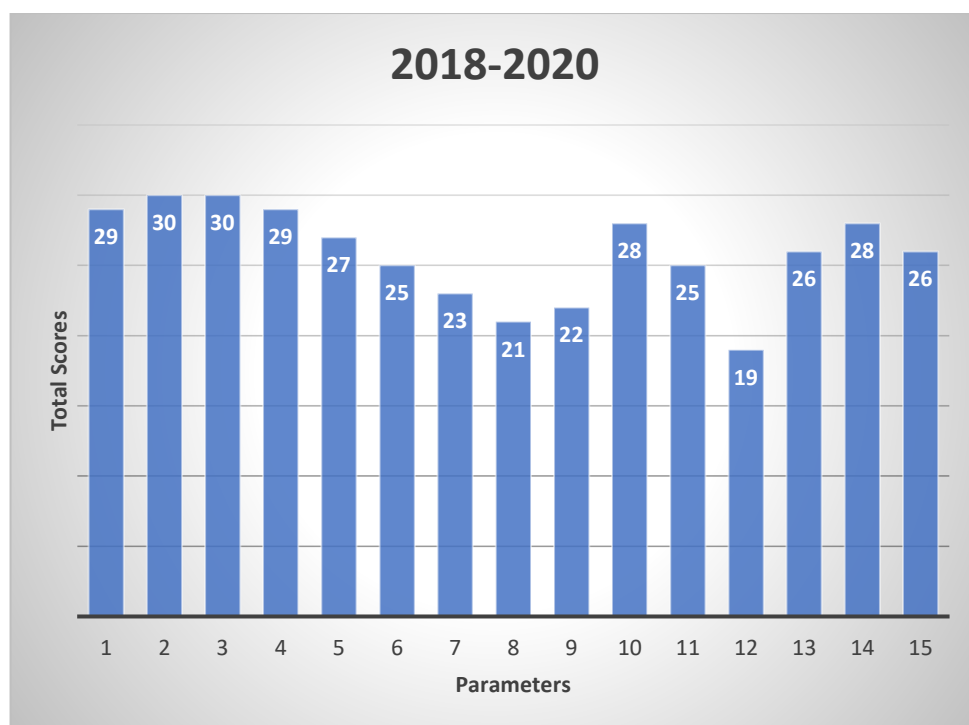
**Responses**

On a scale of (1-5) with 1 being the lowest and 5 being the highest, the following items corresponding to the course curriculum were given to the students for rating. The numbers shown against each parameter are the number of responses (students) in that score-line.

S/N	Particulars	1	2	3	4	5	Total Score
1	Suitability of the ongoing courses in the present context				1	5	29
2	Semester wise course credit distribution in the syllabus					6	30
3	Sequence of the courses in the syllabus					6	30
4	Adequacy of instructional hours in terms of lecture, practicals, tutorials				1	5	29
5	Adequacy of the course curriculum w.r.t. the programme				3	3	27
6	Provision of choices/electives for students in selecting courses			1	3	2	25
7	Orientation of the courses towards industry/societal needs		1	1	2	2	23
8	Availability of skill development/entrepreneurship-oriented components		1	2	2	1	21
9	Adequacy of projects/internships/fieldwork/laboratories for practical exposure in the syllabus		1	1	3	1	22
10	Research component in the courses			1		5	28
11	Provision of enhancing student's creativity within the courses			1	3	2	25

12	Relevance of the syllabus towards employability of students		2	2	1	1	19
13	Conduciveness of the syllabus content towards higher studies				4	2	26
14	Suitability of the Textbooks/reference material suggested for the courses				2	4	28
15	Size of the syllabus in terms of load on the student			1	2	3	26

## Analysis



### Parameters:

- \*1 - Suitability of the ongoing courses in the present context
- \*2 - Semester wise course credit distribution in the syllabus
- \*3 - Sequence of the courses in the syllabus
- \*4 - Adequacy of instructional hours in terms of lecture, practicals, tutorials
- \*5 - Adequacy of the course curriculum w.r.t. the programme
- \*6 - Provision of choices/electives for students in selecting courses
- \*7 - Orientation of the courses towards industry/societal needs
- \*8 - Availability of skill development/entrepreneurship-oriented components
- \*9 - Adequacy of projects/internships/fieldwork/laboratories for practical exposure in the syllabus
- \*10 - Research component in the courses
- \*11 - Provision of enhancing student's creativity within the courses
- \*12 - Relevance of the syllabus towards employability of students
- \*13 - Conduciveness of the syllabus content towards higher studies
- \*14 - Suitability of the Textbooks/reference material suggested for the courses
- \*15 - Size of the syllabus in terms of load on the student

Total 06 responses have been considered for the analysis of this batch. Except the parameter 12, all other parameters have scores above 20.

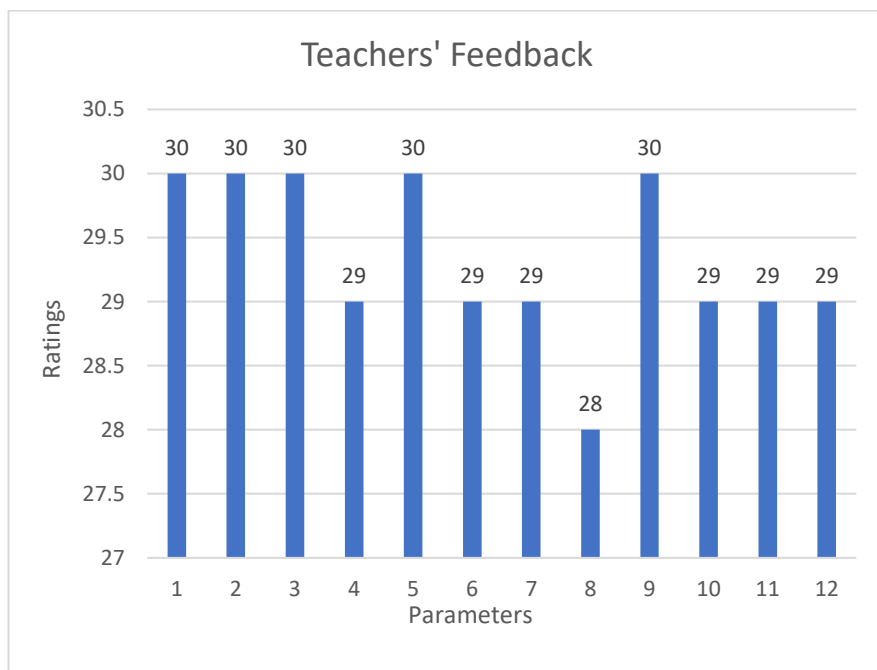
## 2 Teachers

### Responses

On a scale of (1-5) with 1 being the lowest and 5 being the highest, rate the following items corresponding to the course curriculum of above programme.

S/N	Particulars	1	2	3	4	5	Total Score
1	Alignment of the course and programme outcomes					6	30
2	Fulfillment of learning objectives through the course content					6	30
3	Semester wise course credit distribution in the syllabus					6	30
4	Sequence of the courses in the syllabus				1	5	29
5	Adequacy of instructional hours in terms of lecture, practicals, tutorials					6	30
6	Adequacy of the course curriculum w.r.t. the programme				1	5	29
7	Provision of choices/electives for students in selecting courses				1	5	29
8	Adequacy of projects/internships/fieldwork/laboratories for practical exposure in the syllabus				2	4	28
9	Research component in the courses					6	30
10	Provision of enhancing student's creativity within the courses				1	5	29
11	Suitability of the Textbooks/reference material suggested for the courses				1	5	29
12	Availability of the reading material suggested for the courses				1	5	29

## Analysis



### Parameters:

- \*1 - Suitability of the ongoing courses in the present context
- \*2 - Semester wise course credit distribution in the syllabus
- \*3 - Sequence of the courses in the syllabus
- \*4 - Adequacy of instructional hours in terms of lecture, practicals, tutorials
- \*5 - Adequacy of the course curriculum w.r.t. the programme
- \*6 - Provision of choices/electives for students in selecting courses
- \*7 - Orientation of the courses towards industry/societal needs
- \*8 - Availability of skill development/entrepreneurship-oriented components
- \*9 - Adequacy of projects/internships/fieldwork/laboratories for practical exposure in the syllabus
- \*10 - Research component in the courses
- \*11 - Provision of enhancing student's creativity within the courses
- \*12 - Relevance of the syllabus towards employability of students
- \*13 - Conduciveness of the syllabus content towards higher studies
- \*14 - Suitability of the Textbooks/reference material suggested for the courses
- \*15 - Size of the syllabus in terms of load on the student

Out of total 30 marks, the scores range between 28 to 30 and teachers' satisfaction level on course curriculum ranges from high to very high. The lowest scores were obtained in the 8<sup>th</sup> parameter.

**Feedback Analysis**  
**MA in Linguistics and Endangered Languages**  
**Year 2018 - 2020**

**1 Students**

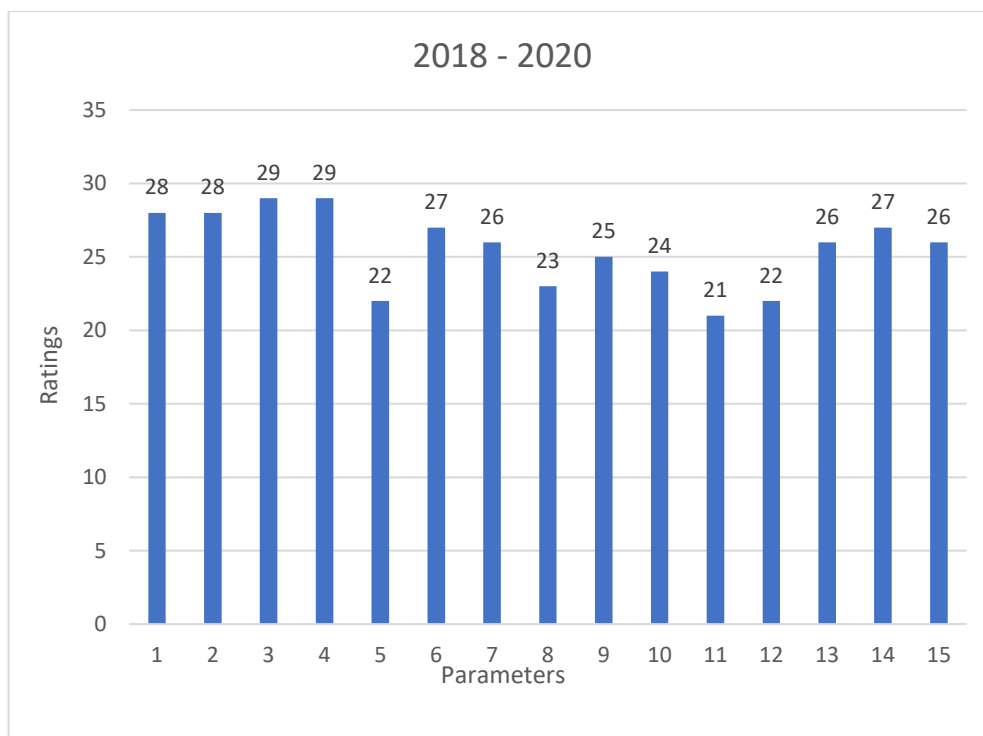
**Responses**

On a scale of (1-5) with 1 being the lowest and 5 being the highest, the following items corresponding to the course curriculum were given to the students for rating. The numbers shown against each parameter are the number of responses (students) in that score-line.

<b>S/N</b>	<b>Particulars</b>	<b>1</b>	<b>2</b>	<b>3</b>	<b>4</b>	<b>5</b>	<b>Total Score</b>
1	Suitability of the ongoing courses in the present context				2	4	<b>28</b>
2	Semester wise course credit distribution in the syllabus				2	4	<b>28</b>
3	Sequence of the courses in the syllabus				1	5	<b>29</b>
4	Adequacy of instructional hours in terms of lecture, practicals, tutorials				1	5	<b>29</b>
5	Adequacy of the course curriculum w.r.t. the programme			1	1	3	<b>22</b>
6	Provision of choices/electives for students in selecting courses			1	1	4	<b>27</b>
7	Orientation of the courses towards industry/societal needs			1	2	3	<b>26</b>
8	Availability of skill development/entrepreneurship-oriented components		1	1	2	2	<b>23</b>
9	Adequacy of projects/internships/fieldwork/laboratories for practical exposure in the syllabus			2	1	3	<b>25</b>
10	Research component in the courses			1	3	2	<b>24</b>
11	Provision of enhancing student's creativity within the courses		1	2	2	1	<b>21</b>
12	Relevance of the syllabus towards employability of students		1	2	1	2	<b>22</b>

13	Conduciveness of the syllabus content towards higher studies			1	2	3	<b>26</b>
14	Suitability of the Textbooks/reference material suggested for the courses				3	3	<b>27</b>
15	Size of the syllabus in terms of load on the student			1	2	3	<b>26</b>

## Analysis



### Parameters:

- \*1 - Suitability of the ongoing courses in the present context
- \*2 - Semester wise course credit distribution in the syllabus
- \*3 - Sequence of the courses in the syllabus
- \*4 - Adequacy of instructional hours in terms of lecture, practicals, tutorials
- \*5 - Adequacy of the course curriculum w.r.t. the programme
- \*6 - Provision of choices/electives for students in selecting courses
- \*7 - Orientation of the courses towards industry/societal needs
- \*8 - Availability of skill development/entrepreneurship-oriented components
- \*9 - Adequacy of projects/internships/fieldwork/laboratories for practical exposure in the syllabus
- \*10 - Research component in the courses
- \*11 - Provision of enhancing student's creativity within the courses
- \*12 - Relevance of the syllabus towards employability of students
- \*13 - Conduciveness of the syllabus content towards higher studies
- \*14 - Suitability of the Textbooks/reference material suggested for the courses
- \*15 - Size of the syllabus in terms of load on the student

Total 06 students have submitted their feedbacks for this batch. Out of total 30 marks, the scores range between 22 to 29 and students' satisfaction level of the students of this batch ranges from average to very high. The lowest scores were obtained in parameters 5, 11 and 12.

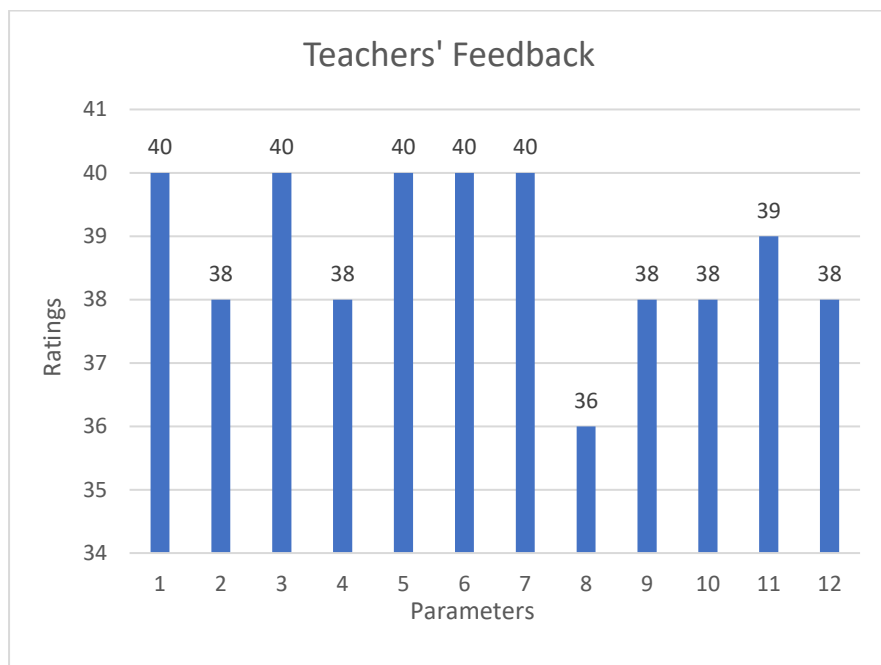
## 2 Teachers

### Responses

On a scale of (1-5) with 1 being the lowest and 5 being the highest, rate the following items corresponding to the course curriculum of above programme.

S/N	Particulars	1	2	3	4	5	Total Score
1	Alignment of the course and programme outcomes					8	40
2	Fulfillment of learning objectives through the course content				2	6	38
3	Semester wise course credit distribution in the syllabus					8	40
4	Sequence of the courses in the syllabus				2	6	38
5	Adequacy of instructional hours in terms of lecture, practicals, tutorials					8	40
6	Adequacy of the course curriculum w.r.t. the programme					8	40
7	Provision of choices/electives for students in selecting courses					8	40
8	Adequacy of projects/internships/fieldwork/laboratories for practical exposure in the syllabus				4	4	36
9	Research component in the courses				2	6	38
10	Provision of enhancing student's creativity within the courses				2	6	38
11	Suitability of the Textbooks/reference material suggested for the courses				1	7	39
12	Availability of the reading material suggested for the courses				2	6	38

## Analysis



### Parameters:

- \*1 - Suitability of the ongoing courses in the present context
- \*2 - Semester wise course credit distribution in the syllabus
- \*3 - Sequence of the courses in the syllabus
- \*4 - Adequacy of instructional hours in terms of lecture, practicals, tutorials
- \*5 - Adequacy of the course curriculum w.r.t. the programme
- \*6 - Provision of choices/electives for students in selecting courses
- \*7 - Orientation of the courses towards industry/societal needs
- \*8 - Availability of skill development/entrepreneurship-oriented components
- \*9 - Adequacy of projects/internships/fieldwork/laboratories for practical exposure in the syllabus
- \*10 - Research component in the courses
- \*11 - Provision of enhancing student's creativity within the courses
- \*12 - Relevance of the syllabus towards employability of students
- \*13 - Conduciveness of the syllabus content towards higher studies
- \*14 - Suitability of the Textbooks/reference material suggested for the courses
- \*15 - Size of the syllabus in terms of load on the student

Out of total 40 marks, the scores range between 36 to 40 and teachers' satisfaction level on course curriculum ranges from high to very high. The lowest scores were obtained in the 8<sup>th</sup> parameters.

12-sep-20

(B.K.Danta, Professor)  
Dept of English